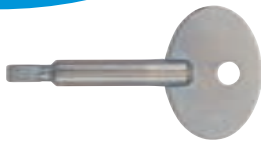
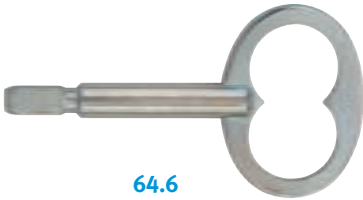
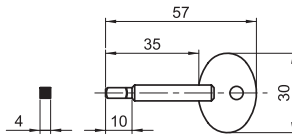


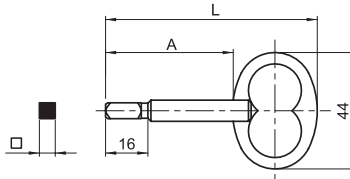
## à carré mâle



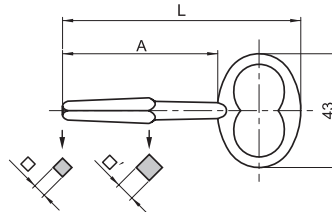
64.4



64.6



63.507



### Clé de loqueteau à carré mâle

Acier zingué

Réf.	□		
64.4	4	12 g	25

pour batteuse 205.15

Réf.	□	L	A		
64.5	5	80	48	27 g	25
64.6*	6	80	48	30 g	25
64.7	7	90	58	40 g	25
64.8	8	90	58	49 g	25

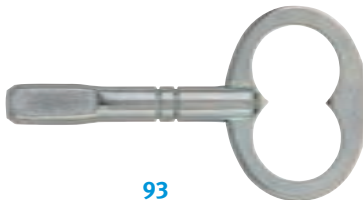
\*pour batteuses 206.18 – 206.20 – 206.22  
2206 – 275 – 406.20 – 4406

### Clé de portière à carré conique

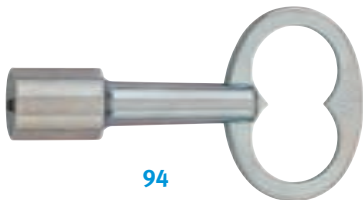
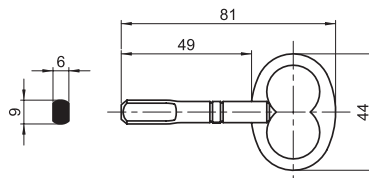
Fonte polie

Réf.	□/□	L	A		
63.408	4/8	90	58	33 g	25
63.507	5/7	90	59	27 g	25
63.608	6/8	102	71	36 g	25
63.610	6/10	112	83	48 g	25

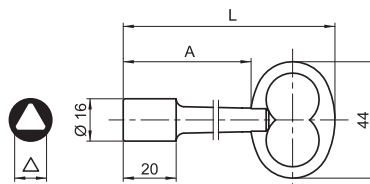
## EDF – GDF



93



94



### Clé à rectangle GDF

6 x 9 mm

Acier zingué

Réf.		
93	31 g	25

pour batteuses 201 – 1201 – 2201 – 2011 – 12011

### Clé à triangle EDF de 11 mm

Acier zingué

Version standard L = 80 mm

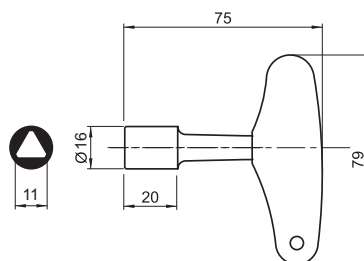
Version longue L = 125 mm

Réf.	L	A		
94	80	48	48 g	25
94.010	125	93	78 g	10

pour batteuses 202 – 203 – 1203 – 2203  
4063 – 4463 – 2021



547.311



### Clé à triangle EDF de 11 mm

Poignée polypropylène bleue

Tige acier zingué

Réf.	△		
547.311	11	74 g	10