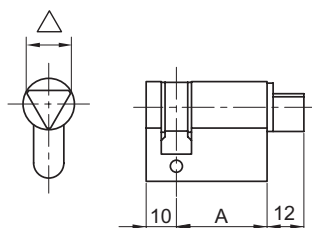


# Cylindre à profil européen à triangle dépassant

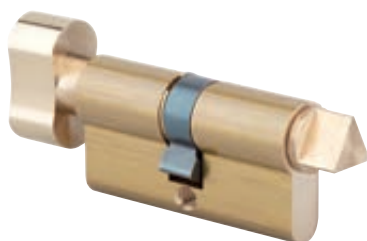


566.14

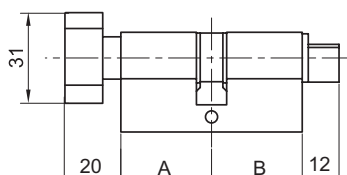


## Demi-cylindre série 566

A x 10	△ 9	△ 11	△ 14
30 x 10	566.09	566.11	566.14
40 x 10	56641.09	56641.11	56641.14
50 x 10	56651.09	56651.11	56651.14
60 x 10	56661.09	56661.11	56661.14
70 x 10	56671.09	56671.11	56671.14
80 x 10	56681.09	56681.11	56681.14



561.14

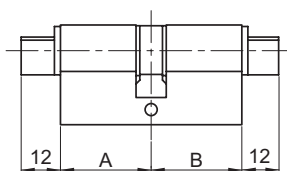


## Cylindre à bouton et triangle série 561

A x B	△ 9	△ 11	△ 14
30 x 30	561.09	561.11	561.14
30 x 40	56134.09	56134.11	56134.14
30 x 50	56135.09	56135.11	56135.14
30 x 60	56136.09	56136.11	56136.14
30 x 70	56137.09	56137.11	56137.14
30 x 80	56138.09	56138.11	56138.14
40 x 40	56144.09	56144.11	56144.14
40 x 50	56145.09	56145.11	56145.14
40 x 60	56146.09	56146.11	56146.14
40 x 70	56147.09	56147.11	56147.14
50 x 50	56155.09	56155.11	56155.14



562.14

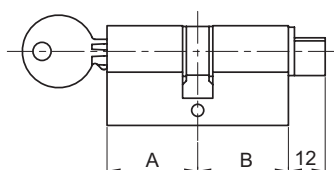


## Cylindre à double triangle série 562

A x B	△ 9	△ 11	△ 14
30 x 30	562.09	562.11	562.14
30 x 40	56234.09	56234.11	56234.14
30 x 50	56235.09	56235.11	56235.14
30 x 60	56236.09	56236.11	56236.14
30 x 70	56237.09	56237.11	56237.14
30 x 80	56238.09	56238.11	56238.14
40 x 40	56244.09	56244.11	56244.14
40 x 50	56245.09	56245.11	56245.14
40 x 60	56246.09	56246.11	56246.14
40 x 70	56247.09	56247.11	56247.14
50 x 50	56255.09	56255.11	56255.14



563.14



## Cylindre à clé et triangle série 563

5 goupilles, varié, livré avec 3 clés  
s'ouvrant sur demande

A x B	△ 9	△ 11	△ 14
30 x 30	563.09	563.11	563.14
30 x 40	56334.09	56334.11	56334.14
30 x 50	56335.09	56335.11	56335.14
30 x 60	56336.09	56336.11	56336.14
30 x 70	56337.09	56337.11	56337.14
30 x 80	56338.09	56338.11	56338.14
40 x 40	56344.09	56344.11	56344.14
40 x 50	56345.09	56345.11	56345.14
40 x 60	56346.09	56346.11	56346.14
40 x 70	56347.09	56347.11	56347.14
50 x 50	56355.09	56355.11	56355.14

- Autres dimensions : nous consulter
- Panneton PM2
- Finition nickelée