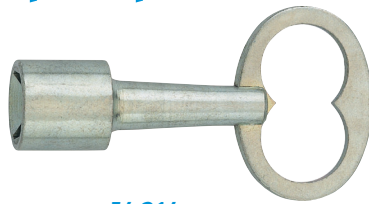
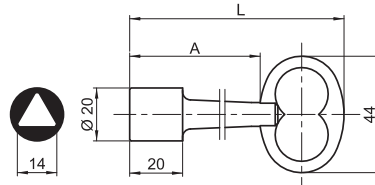


# Clés à triangle

## pompier



54.314



### Clé à triangle pompier de 14 mm

Acier zingué

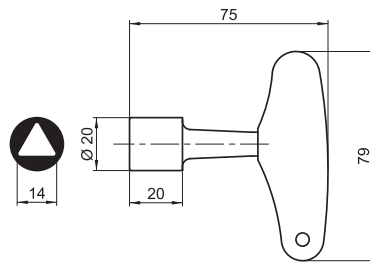
Version standard L = 80 mm

Version longue L = 125 mm

Réf.	L	A		
54.314	80	49	64 g	25
54.314A	125	93	101 g	10



547.314



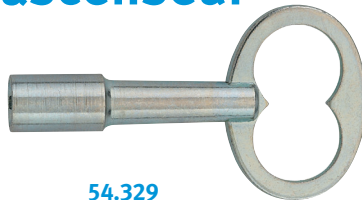
### Clé à triangle pompier de 14 mm

Poignée polypropylène rouge

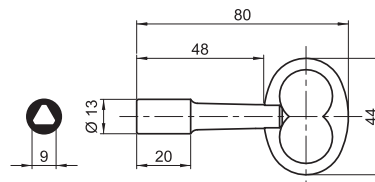
Tige acier zingué

Réf.			
547.314	14	74 g	10

## ascenseur



54.329



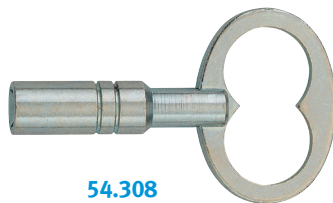
### Clé à triangle ascenseur de 9 mm

Norme NF EN 81 ou CNOM02

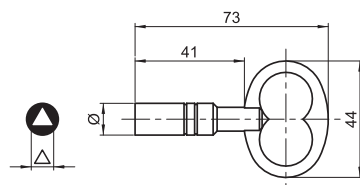
Acier zingué

Réf.			
54.329	9	44 g	25

## divers



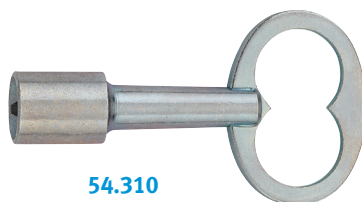
54.308



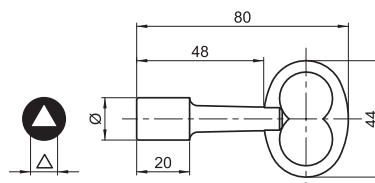
### Clé à triangle femelle

Acier zingué

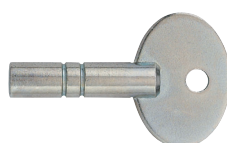
Réf.		$\emptyset$		
54.306	6	10	33 g	25
54.307	7	11	37 g	25
54.308	8*	12	40 g	25
54.309	9	14	45 g	25
54.310	10	16	53 g	25
Variante 54.308, longueur = 102 mm				
540.308	8*	12	65 g	25



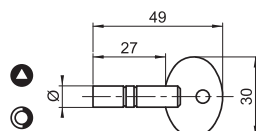
54.310



\*Triangle type CNOM01



88.305



### Clé de cadenas d'artillerie

À triangle ou demi-lune

Acier zingué

Réf.		$\emptyset$		
88.304	$\Delta$ 4	7	16 g	25
88.305	$\Delta$ 5	8	18 g	25
88.901		8	17 g	25