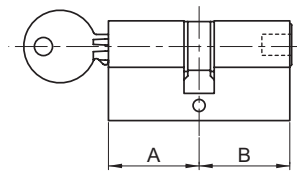
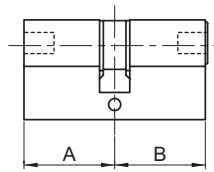
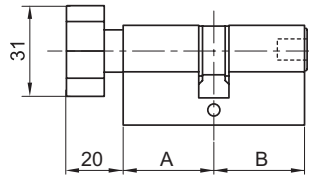
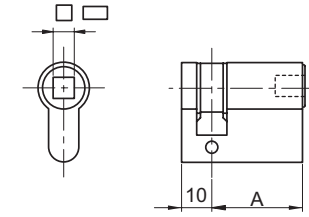




Cylindre à profil européen

à carré femelle et rectangle GDF



Demi-cylindre série 567

A x 10	□ 6	□ 7	□
30 x 10	56731.66	56731.77	56731.96
40 x 10	56741.66	56741.77	56741.96
50 x 10	56751.66	56751.77	56751.96

Cylindre à bouton série 569

A x B	□ 6	□ 7	□
30 x 30	56933.66	56933.77	56933.96
30 x 40	56934.66	56934.77	56934.96
30 x 50	56935.66	56935.77	56935.96
30 x 60	56936.66	56936.77	56936.96
40 x 40	56944.66	56944.77	56944.96

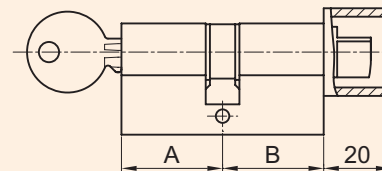
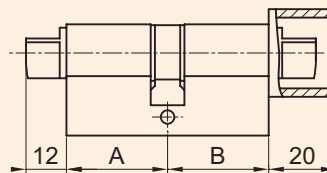
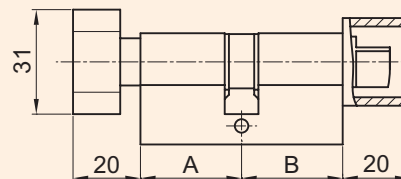
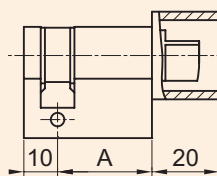
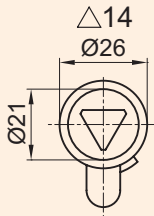
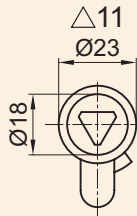
Cylindre double série 567

A x B	□ 6	□ 7	□
30 x 30	56733.66	56733.77	56733.96
30 x 40	56734.66	56734.77	56734.96
30 x 50	56735.66	56735.77	56735.96
30 x 60	56736.66	56736.77	56736.96
40 x 40	56744.66	56744.77	56744.96

Cylindre à clé série 568

A x B	□ 6	□ 7	□
30 x 30	56833.66	56833.77	56833.96
30 x 40	56834.66	56834.77	56834.96
30 x 50	56835.66	56835.77	56835.96
30 x 60	56836.66	56836.77	56836.96
40 x 40	56844.66	56844.77	56844.96

à triangle protégé



Demi-cylindre série 566.P

A x 10	△ 11	△ 14
28 x 10	56631.11P	56631.14P
38 x 10	56641.11P	56641.14P
48 x 10	56651.11P	56651.14P

Cylindre à bouton série 561.P

A x B	△ 11	△ 14
30 x 28	56133.11P	56133.14P
30 x 38	56134.11P	56134.14P
30 x 48	56135.11P	56135.14P
40 x 38	56144.11P	56144.14P

Cylindre double 1 côté protégé série 562.P

A x B	△ 11	△ 14
30 x 28	56233.11P	56233.14P
30 x 38	56234.11P	56234.14P
30 x 48	56235.11P	56235.14P
40 x 38	56244.11P	56244.14P

Cylindre à clé série 563.P

A x B	△ 11	△ 14
30 x 28	56333.11P	56333.14P
30 x 38	56334.11P	56334.14P
30 x 48	56335.11P	56335.14P
40 x 38	56344.11P	56344.14P

Autres dimensions

► Nous consulter