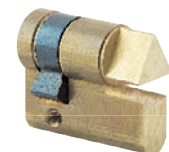
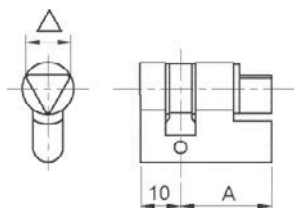


Cylindre à profil européen à triangle

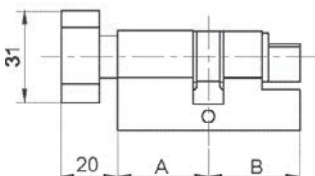
à triangle affleurant



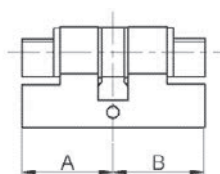
566.14A



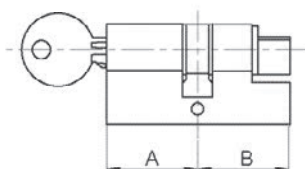
561.14A



562.14A



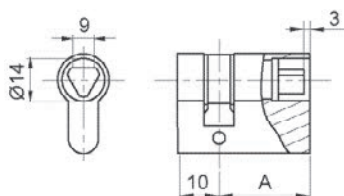
563.14A



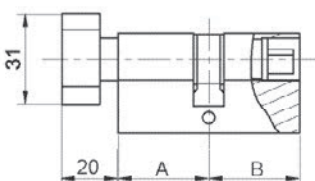
à triangle intérieur 9 mm



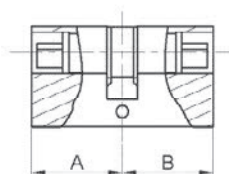
566.09I



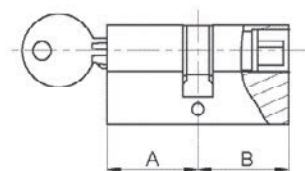
561.09I



562.09I



563.09I



Demi-cylindre série 566.A

A x 10 \ Δ	Δ 9	Δ 11	Δ 14
30 x 10	566.09A	566.11A	566.14A
40 x 10	56641.09A	56641.11A	56641.14A
50 x 10	56651.09A	56651.11A	56651.14A

Cylindre à bouton et triangle série 561.A

A x B \ Δ	Δ 9	Δ 11	Δ 14
30 x 30	561.09A	561.11A	561.14A
30 x 40	56134.09A	56134.11A	56134.14A
30 x 50	56135.09A	56135.11A	56135.14A
30 x 60	56136.09A	56136.11A	56136.14A
40 x 40	56144.09A	56144.11A	56144.14A

Cylindre à double triangle série 562.A

A x B \ Δ	Δ 9	Δ 11	Δ 14
30 X 30	562.09A	562.11A	562.14A
30 X 40	56234.09A	56234.11A	56234.14A
30 X 50	56235.09A	56235.11A	56235.14A
30 X 60	56236.09A	56236.11A	56236.14A
40 X 40	56244.09A	56244.11A	56244.14A

Cylindre à clé et triangle série 563.A

A x B \ Δ	Δ 9	Δ 11	Δ 14
30 X 30	563.09A	563.11A	563.14A
30 X 40	56334.09A	56334.11A	56334.14A
30 X 50	56335.09A	56335.11A	56335.14A
30 X 60	56336.09A	56336.11A	56336.14A
40 X 40	56344.09A	56344.11A	6344.14A

Demi-cylindre série 566.I

A x 10 \ Δ	Δ 9
30 x 10	566.09I
40 x 10	56641.09I
50 x 10	56651.09I

Cylindre à bouton et triangle série 561.I

A x B \ Δ	Δ 9
30 x 30	561.09I
30 x 40	56134.09I
30 x 50	56135.09I
30 x 60	56136.09I
40 x 40	56144.09I

Cylindre à double triangle série 562.I

A x B \ Δ	Δ 9
30 x 30	562.09I
30 x 40	56234.09I
30 x 50	56235.09I
30 x 60	56236.09I
40 x 40	56244.09I

Cylindre à clé et triangle série 563.I

A x B \ Δ	Δ 9
30 x 30	563.09I
30 x 40	56334.09I
40 x 40	56344.09I

... X ... autres dimensions : nous consulter

Clé à utiliser
Réf. 54.329
page 31